



Rabbit Skins™ Infant Short Sleeve Baby Rib Bodysuit. RS4400



These bodysuits feature lap shoulders to make it easier for the many times a day that parents have to change baby's outfit.

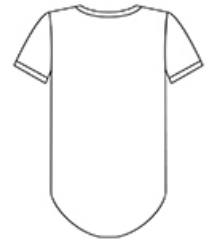
- 5-ounce, 100% combed ring spun cotton 1x1 baby rib
- 88/12 combed ring spun cotton/poly (Heather)
- White is sewn with 100% cotton thread for easy garment dyeing
- Side seamed
- EasyTear™ label for additional comfort and ability to brand as your own
- Flatlock seams
- Double-needle ribbed binding on neck, shoulders, sleeves and leg openings
- Innovative three-snap closure

CARE INSTRUCTIONS

Machine wash cold. Only non-chlorine bleach. Tumble dry low. Do not iron on decoration. Do not dry clean. Not intended for sleepwear.



front



back

SIZE CHART

	NB	06M	12M	18M	24M
Chest Width	7 1/4	8 3/4	9 3/4	10 3/4	11 3/4
Body Length at Back	11 1/2	12 1/2	13 1/2	14 1/2	15 1/2
Sleeve Length	2 1/2	2 3/4	3	3 1/4	3 1/2

COLOR INFORMATION

Please note: PMS code information is shown only when an exact match is available.

										
Banana PMS 1205C	Black PMS BLACK 6C	Charcoal PMS 445C	Granite Heather PMS 425C	Heather PMS COOL GRAY 5C	Hot Pink PMS 1915C	Kelly PMS 3288C	Key Lime PMS 366C	Light Blue PMS 543C	Navy PMS 655C	Orange PMS 172C
					White					
Pink PMS 1895C	Purple PMS 269C	Red PMS 185C	Royal PMS 287C	Turquoise PMS 639C		Yellow PMS 116C				